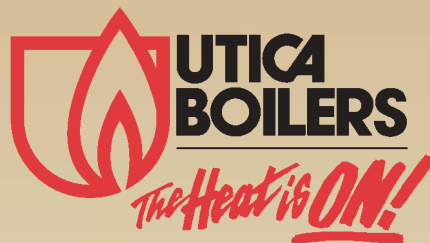
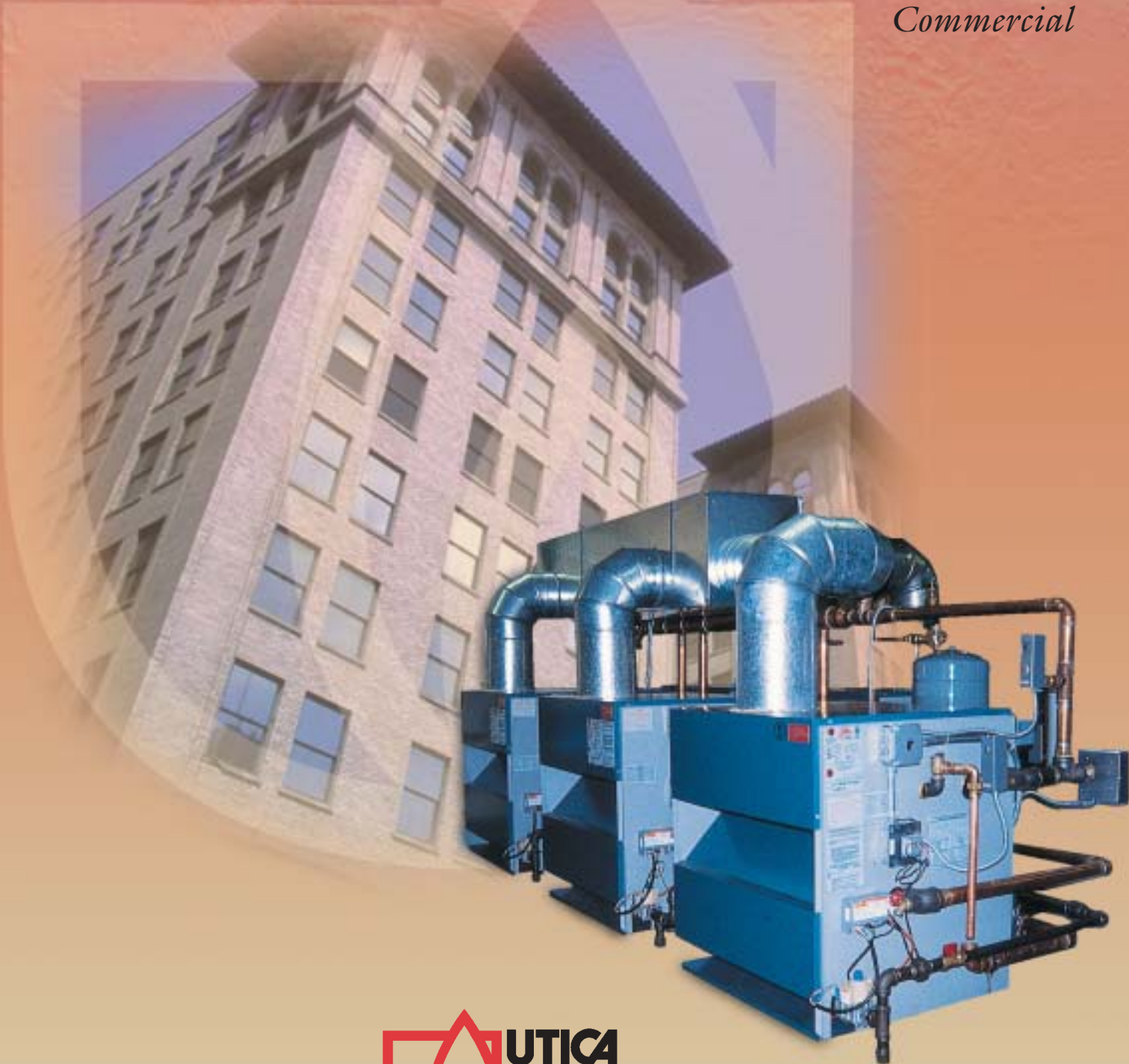


Gas-Fired Water Multiple Boiler System

Quality Engineered for Efficiency and Dependability

Modu-Pac
Commercial



Modu-Pac

Commercial, Gas-Fired, Hot Water Multiple Boiler System

Warm-Up to the Economy and Efficiency of a Modu-Pac Boiler System

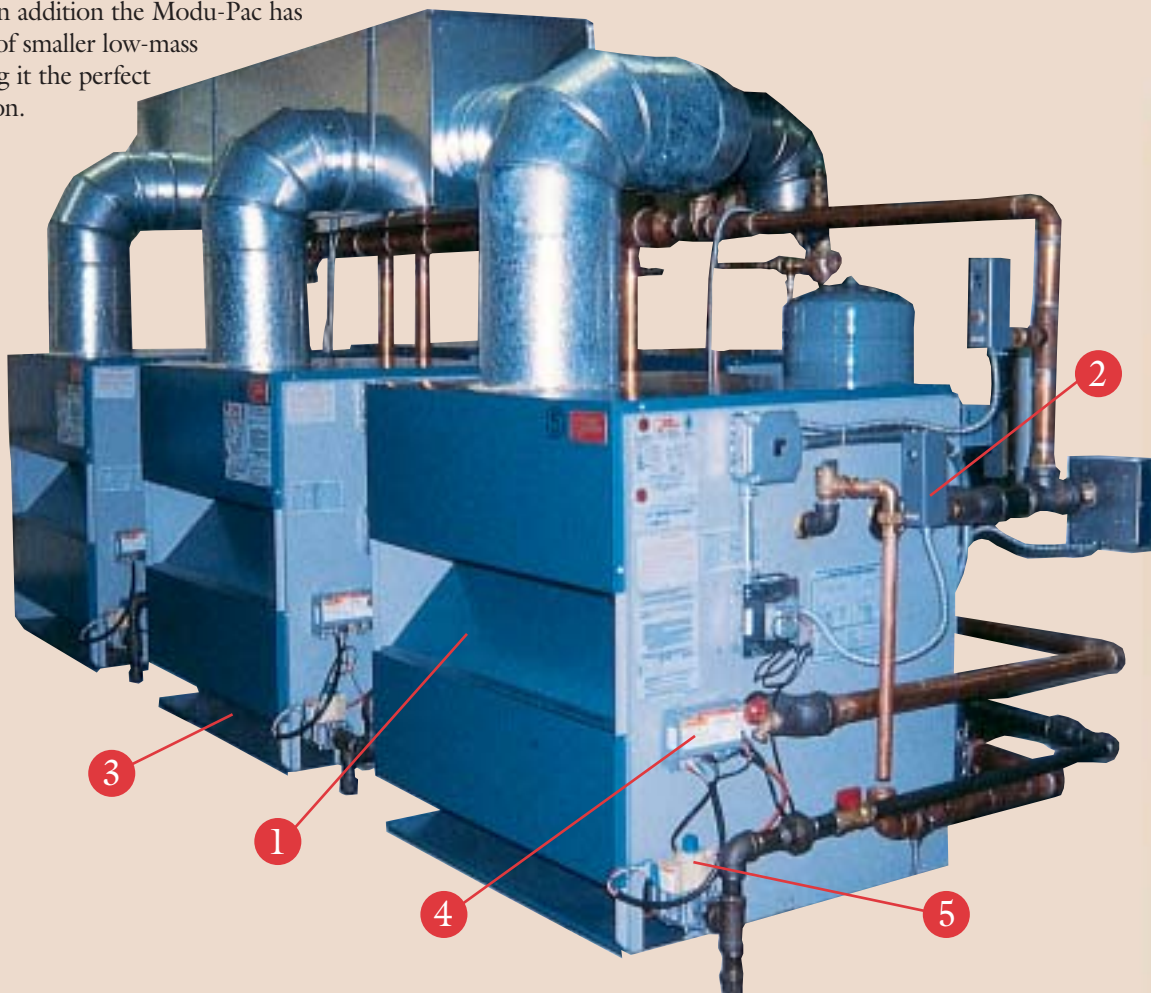
The MAGB Gas Modu-Pac boiler is the ideal replacement or new construction choice for today's commercial buildings requiring hot water heat. Composed of two or more modules with input ranges from 500,000 to 2,400,000 BTU/h, the MAGB has the flexibility to adapt to a variety of applications while providing outstanding performance, cost efficiency and reliability.

Multiple Boiler Modules For More Efficient Operation

This multi-module system allows the option to step-fire individual boilers or units with an outdoor reset control. By utilizing this type control, only the modules necessary to meet the heating demand of the day need to burn fuel. Most competitors commercial boilers are all "on" or all "off" wasting energy and fuel dollars on mild degree-days. In addition the Modu-Pac has the efficiency of smaller low-mass boilers, making it the perfect heating solution.

Cast-Iron Heat Exchanger

The Modu-Pac utilizes cast-iron construction because of its durability and efficient heat transfer capabilities. Cast iron sections and push nipples are utilized to construct the heat exchanger. Using only the highest quality cast-iron and heat transfer designs, the Modu-Pac will provide many years of efficient and trouble-free operation. And since multiple cast-iron heat exchangers are utilized, a total system shutdown is avoided because each module can operate independently and be serviced when necessary without effecting system operation.





Installation Flexibility

Modules can be arranged either side by side or back to back for installation flexibility. Unlike massive one piece commercial boiler heat exchangers, the Modu-Pac can fit through small doorways eliminating any building modifications.

Factory Tested

Each Modu-Pac Boiler is shipped with controls pre-wired and is subjected to a series of rigorous quality assurance tests to provide quick and easy setup in the field.



Modu-Pac Boiler Details.

- 1 Integral Draft Diverter
- 2 Hi-Limit Aquastat Control
- 3 Stainless Steel Burner
- 4 Optional Electric Ignition
- 5 2-Stage Gas Valve

Key Modu-Pac Boiler Features

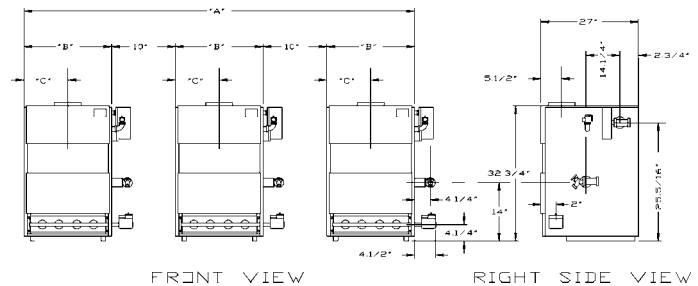
- Modular Efficiency
- Corrosion resistant stainless steel burners
- Cast Iron Sections and Push Nipples
- 500,000-2,400,000 BTU/h input
- Chimney Vented
- Natural Gas or Propane

Modu-Pac

Commercial, Gas-Fired, Hot Water Multiple Boiler System

Engineering Dimensional Data

MODEL NUMBER MAGB	NUMBER OF MODULES	SHIPPING WEIGHT (LBS.)	WATER CONTENT (GALLONS)	A INCHES	B INCHES	C INCHES
500	2	945	17.6	62.250"	26.625"	13.313"
600	2	1065	20.8	70.000"	30.500"	15.250"
750	3	1400	26.4	97.875"	26.625"	13.313"
900	3	1600	31.2	109.500"	30.500"	15.250"
1000	4	1890	35.2	133.500"	26.625"	13.313"
1200	4	2135	41.6	149.000"	30.500"	15.250"
1500	5	2665	52.0	188.000"	30.500"	15.250"
1800	6	3200	62.4	228.000"	30.500"	15.250"
2100	7	3730	72.8	267.500"	30.500"	15.250"
2400	8	4265	83.2	307.000"	30.500"	15.250"



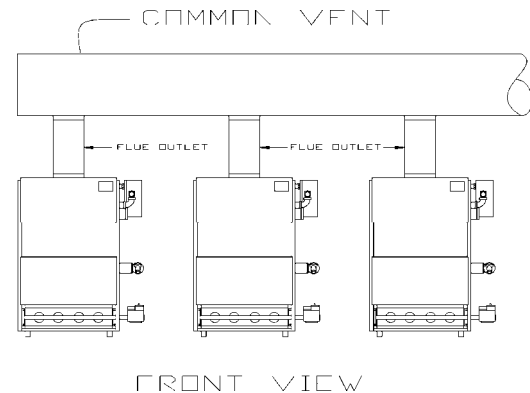
FRONT VIEW

RIGHT SIDE VIEW



Engineering Specifications

MODEL NUMBER MAGB	AGA INPUT BTU/HR.	AGA OUTPUT *BTU/HR.	NET I=B+R** WATER RATINGS BTU/HR.	SQ. FT.	FLUE OUTLET DIA. 8"	COMMON VENT NO. 9"	CHIMNEY DIAMETER & HEIGHT
500	500,000	410,000	356,500	2,377	2	10"	12" X 15'
600	600,000	480,000	423,000	2,817	2	12"	14" X 15'
750	750,000	615,000	533,000	3,553	3	12"	14" X 20'
900	900,000	720,000	634,000	4,226	3	14"	16" X 20'
1000	1,000,000	820,000	713,000	4,753	4	14"	16" X 20'
1200	1,200,000	960,000	845,000	5,635	4	16"	18" X 20'
1500	1,500,000	1,200,000	1,057,000	7,043	5	16"	20" X 20'
1800	1,800,000	1,440,000	1,268,000	8,452	6	18"	20" X 30'
2100	2,100,000	1,680,000	1,479,000	9,861	7	20"	22" X 30'
2400	2,400,000	1,920,000	1,690,000	11,289	8	22"	24" X 30'



FRONT VIEW

NOTE: All boilers are design certified for installation on non-combustible floor.

For installation on combustible floors use combustible floor kit.

*NOTE: For operation at altitudes over 2000 ft. above sea level, boiler input and ratings must be reduced by 4 percent for each 1000 ft. above sea level.

**NOTE: The Net I=B+R Water Ratings shown are based on an allowance of 1.15. The manufacturer should be consulted before selecting a boiler for installations having unusual piping and pick-up requirements, such as intermittent system operation, extensive piping systems, etc. For forced hot water heating systems where the boiler and all the piping are within the area to be heated, the boiler may be selected on the basis of its AGA output.

STANDARD EQUIPMENT: Boiler Jacket, Cast-Iron Boiler Sections, Aquastat, Theraltimeter Gauge, Main Gas Burners, 24-volt Gas Control, 30 lb. A.S.M.E. Relief Valve and Drain Cock. Supply & Return Tappings — 1-1/2".

OPTIONAL EQUIPMENT: Incorporated Electronic Ignition Pilot System, Stack Damper(s), Boiler Sequencing and Reset Controls, CSD-1 Control Package, Combustible Floor Kit.

(Specifications and dimensions are subject to change without notice)

MEA# 19-79 Vol.II

Your Assurance Of Quality

Utica Boilers products are designed, tested, and assembled to ensure that you get the very best in home heating and cooling comfort, and value. Each one meets or exceeds all recognized safety, performance and efficiency standards.

For more information on Utica Boilers heating products contact your local Utica Boilers distributor, or call the Utica Boilers Customer Service Department at 1-800-325-5479.



Utica Boilers • P.O. Box 4729 • Utica, New York 13504

Tel. 315-797-1310 • Fax 315-724-9319

Web Site: <http://www.utica boilers.com> • E-mail: sales@uticaboilers.com

An **ECR** International Brand

An ISO 9001 Certified Company



Form No. M Pac. 11/02