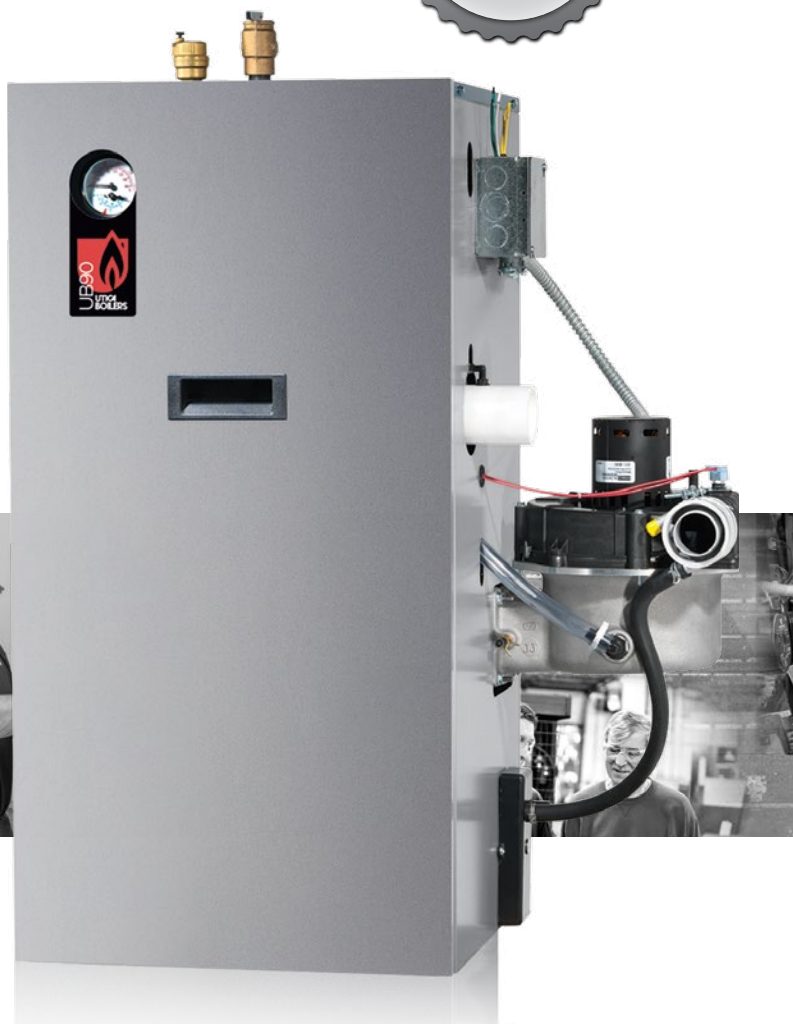




UB90-100 IV

► 90% AFUE Gas-Fired Condensing Hot Water Boiler

- High Efficiency Cast Aluminum Heat Exchanger
- Fuel Smart Hydrostat Control:
 - Temperature Limit
 - Low Water Cut Off (LWCO)
 - Boiler Reset
- Compact Design
- Stainless Steel Premix Burner
- Induced Draft Blower
- FREE 2-Year Parts & Labor Warranty*



*Unit must be registered within 60 days from the date of original installation. All terms of Trinity Extended Service Agreement apply.



There are some things you can always depend on...



www.utica boilers.com

Utica UB90-100 IV Natural or Propane Gas-Fired Condensing Boiler

Dimensions/Weights		Model	Boiler Input Rate (MBH) ⁽¹⁾	Heating Capacity (MBH) ⁽¹⁾⁽²⁾	Net AHRI Rating, Water (MBH) ⁽¹⁾⁽³⁾	AFUE % ⁽²⁾
<div><p>Front</p></div> <div><p>Top</p></div> <div><p>Right</p></div> <div><p>Left</p></div>		UB90-050	50	45	39	90.0%
		UB90-075	75	68	59	90.0%
		UB90-100	100	90	78	90.0%
		(1) 1000 Btu/hr (British Thermal Units Per Hour)				
(2) Heating Capacity and AFUE (Annual Fuel Utilization Efficiency) are based on DOE (Department of Energy) test procedures.						
(3) Net AHRI Ratings based on piping and pickup allowance of 1.15. Contact Technical Support before selecting boiler for installations having unusual piping and pickup requirements, such as intermittent system operation, extensive piping systems, etc.						
General Information (See Installation, Operation and Maintenance Manual for complete instructions)						
Clearances (4) Required distances measured from boiler. (5) Service, proper operation clearance recommendation.	Combustible Materials (Required) ⁽⁴⁾		Service ⁽⁵⁾			
			8" (204 mm)			
	Top		1" (26 mm)			
	Left Side		1" (26 mm)			
	Right Side		11" (280 mm)			
	Base		1" (26 mm)			
	Front		1" (26 mm)			
	Back		1" (26 mm)			
	Combustion Air/Vent Piping		0" (0 mm)			
Combustion Air & Vent Pipe Equivalent Length (Schedule 40 PVC)	Min. Length	2" Pipe 050/075	2" Pipe 100	3" Pipe 050/075	3" Pipe 100	
		2 Ft. (0.61 m)	2 Ft. (0.61 m)	20 Ft. (6.09 m)	15 Ft. (4.57 m)	
	Max. Length	26 Ft. (7.92 m)	21 Ft. (6.40 m)	112 Ft. (34.14 m)	92 Ft. (28.04 m)	
		Note: Refer to IOM and vent pipe manufacturer's instructions for equivalent vent lengths and alternate venting materials.				
Connections	Return/Supply Water	Gas In	Condensate Drain			
050/075/100	1-1/4" NPT	1/2" NPT	1/2" NPT			
Electrical	120 Volts AC, 60 hertz, 1 phase, Less than 12 amps (15 amp circuit recommended)					
Water Content	050/075/100 - 2.6 Gallons					
Standard Equipment	<ul style="list-style-type: none">- Boiler Control Module: HSI Integrated Boiler Control- Combination Hydrolevel High Limit and LWCO with boiler water temperature reset feature- Heat Exchanger: Cast Aluminum Heat Exchanger- Combustion: Stainless Steel Premix Burner- Induced Draft Blower with adjustable exhaust (front, right side or rear), Inducer Motor Assembly, includes 5' schedule 80 2" CPVC and CPVC Tee- Electrical: Junction Box, Transformer and Wiring Harness- Other: Temperature/Pressure Gauge, 30 PSI Safety Relief Valve, Pressure Switch(es), Low Profile Condensate Trap, Air Vent and Leveling Legs					
Options	Natural Gas or Propane					
Model	Ship Wgt.	Certifications <div><div></div><div></div><div></div><div></div><div></div><div></div><div>50 psi MAWP</div></div>				
UB90-050	220 lbs. (100 kg)					
UB90-075	220 lbs. (100 kg)					
UB90-100	220 lbs. (100 kg)					

All ratings and specifications subject to change.

PN 240005079 Rev. 6/16



P.O. Box 4729
Utica, New York 13504

Tel: 315.797.1310
Fax: 315.797.3762

Contractor Assistance:
800.325.5479

www.utica boilers.com